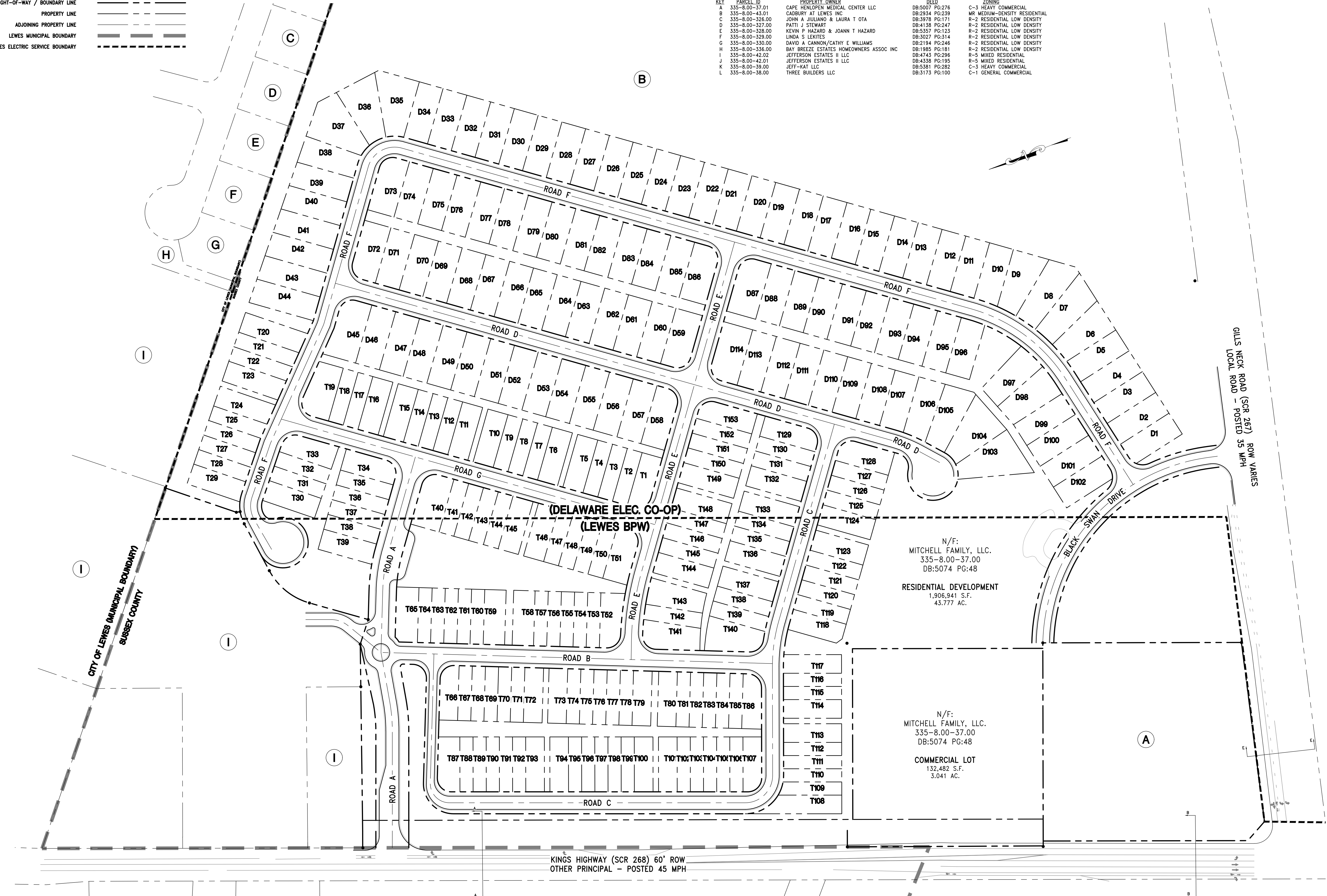


**LEGEND**

RIGHT-OF-WAY / BOUNDARY LINE	---
PROPERTY LINE	---
ADJOINING PROPERTY LINE	---
LEWES MUNICIPAL BOUNDARY	---
LEWES ELECTRIC SERVICE BOUNDARY	---

**ADJACENT PROPERTY OWNERS**

KEY	PARCEL ID	PROPERTY OWNER	DEED	ZONING
A	335-8.00-37.01	CAPE HENLOPEN MEDICAL CENTER LLC	DB:5007 PG:276	C-3 HEAVY COMMERCIAL
B	335-8.00-43.01	CADBURY AT LEWES INC	DB:2934 PG:239	MR MEDIUM-DENSITY RESIDENTIAL
C	335-8.00-326.00	JOHN A JULIANO & LAURA T OTA	DB:3978 PG:171	R-2 RESIDENTIAL LOW DENSITY
D	335-8.00-327.00	PATTI J STEWART	DB:4138 PG:247	R-2 RESIDENTIAL LOW DENSITY
E	335-8.00-328.00	KEVIN P HAZARD & JOANN T HAZARD	DB:5357 PG:123	R-2 RESIDENTIAL LOW DENSITY
F	335-8.00-329.00	LINDA S LEXITES	DB:3027 PG:314	R-2 RESIDENTIAL LOW DENSITY
G	335-8.00-330.00	DAVID A CANNON/CATHY E WILLIAMS	DB:2194 PG:246	R-2 RESIDENTIAL LOW DENSITY
H	335-8.00-336.00	BAY BREEZE ESTATES HOMEOWNERS ASSOC INC	DB:1985 PG:181	R-2 RESIDENTIAL LOW DENSITY
I	335-8.00-42.02	JEFFERSON ESTATES II LLC	DB:4743 PG:296	R-5 MIXED RESIDENTIAL
J	335-8.00-42.01	JEFFERSON ESTATES II LLC	DB:4338 PG:195	R-5 MIXED RESIDENTIAL
K	335-8.00-39.00	JEFF-KAT LLC	DB:5381 PG:282	C-3 HEAVY COMMERCIAL
L	335-8.00-38.00	THREE BUILDERS LLC	DB:3173 PG:100	C-1 GENERAL COMMERCIAL



CITY OF LEWES MUNICIPAL BOUNDARY  
SUSSEX COUNTY

(DELAWARE ELEC. CO-OP)  
(LEWES BPW)

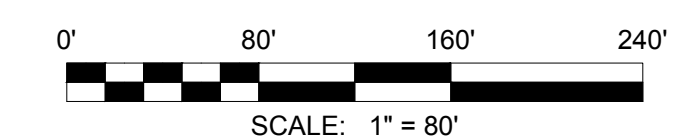
N/F:  
MITCHELL FAMILY, LLC.  
335-8.00-37.00  
DB:5074 PG:48  
RESIDENTIAL DEVELOPMENT  
1,906,941 S.F.  
43.777 AC.

N/F:  
MITCHELL FAMILY, LLC.  
335-8.00-37.00  
DB:5074 PG:48  
COMMERCIAL LOT  
132,482 S.F.  
3.041 AC.

KINGS HIGHWAY (SCR 268) 60' ROW  
OTHER PRINCIPAL - POSTED 45 MPH

GILLS NECK ROAD (SCR 267) ROW VARIES  
LOCAL ROAD - POSTED 35 MPH

BLACK SWAN DRIVE



ARCHITECTS ENGINEERS SURVEYORS  
**DAVIS, BOWEN & FRIEDEL, INC.**  
 1000 MARKET STREET  
 WILMINGTON, DELAWARE 19801  
 (302) 422-1441  
 (410) 770-4744

**MITCHELL FARM**  
**KINGS HIGHWAY (SCR 268)**  
**LEWES & REHOBOTH HUNDRED, SUSSEX COUNTY, DELAWARE**

Revisions:

Date:	JANUARY 2022
Scale:	1" = 80'
Drawn By:	DEG
Proj. No.:	3808A001
Dwg. No.:	<b>BPW-01</b>